

Trenching machine Manual



catalogue

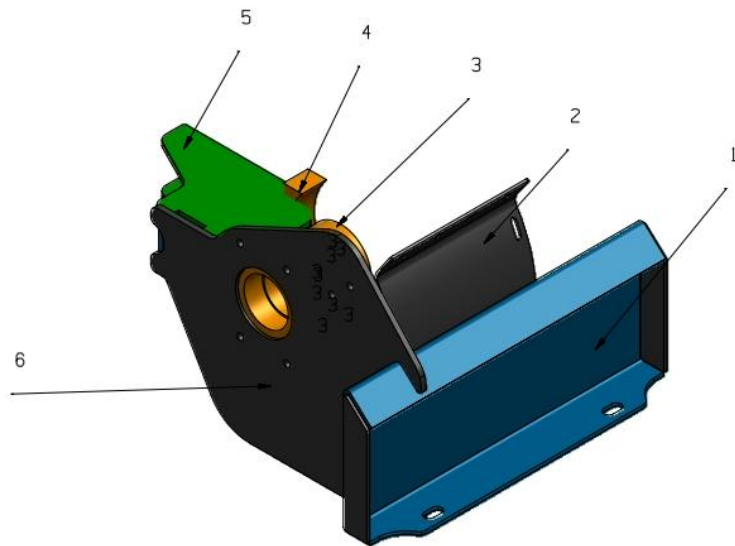
- 1、 Introduction and Application of Trenching Machine
- 2、 Parts drawing and disassembly
- 3、 Specifications and parameters
- 4、 Maintenance
- 5、 Troubleshooting

Introduction and Application of Trenching Machine

Introduction and Application:

Chain type trencher is one of the main types of attachments for skid steer loaders, and is a type of trenching machinery used in earthwork construction. It is widely used in agricultural water conservancy construction, laying of communication cables and pipelines, municipal construction, and military engineering. The functions of trenchers and excavators have many similarities, both of which have the functions of entering soil (soil or rock), breaking soil, and taking soil. The advantage of trenchers is that they can operate continuously, have high construction efficiency, and cause minimal surface damage. They are particularly suitable for laying pipelines and can excavate trenches with regular shapes even in hard geological conditions such as rocks.

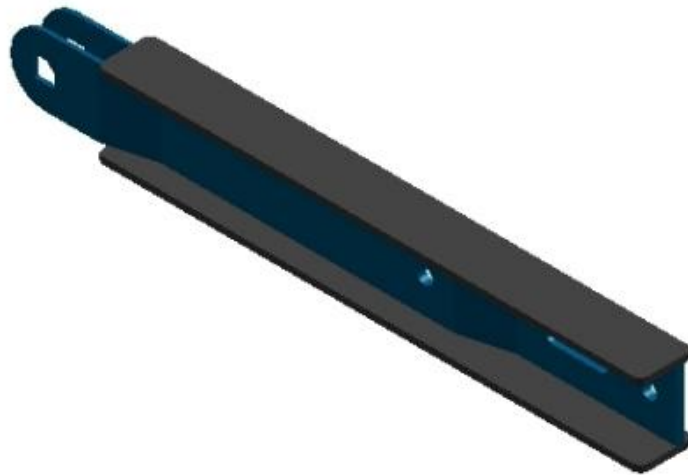
Parts drawing and disassembly



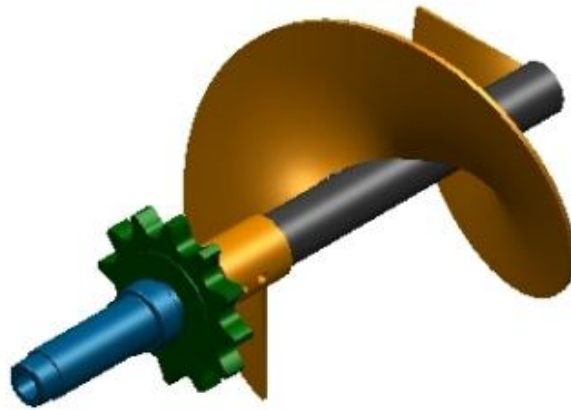
- 1、 Hanging bracket bending plate
- 2、 Guard board
- 3、 Bearing seat
- 4、 Block block
- 5、 Connection board
- 6、 Side panel



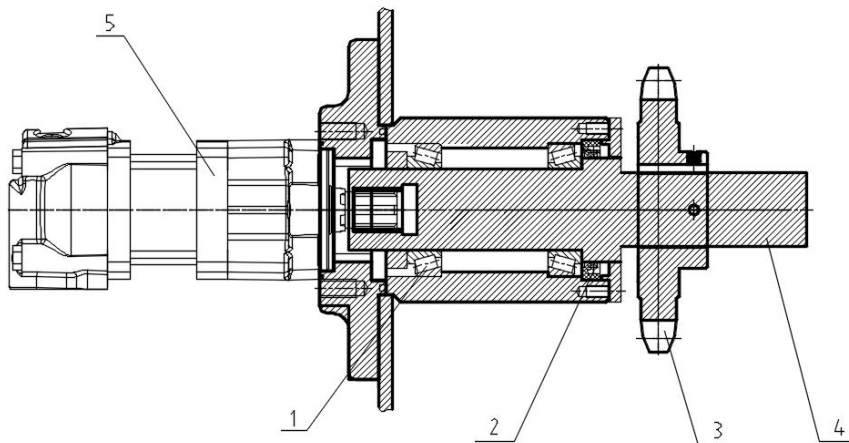
Guarding rod assembly



Tightening assembly



Spiral rod and sprocket assembly



- 1、 Bearing
- 2、 oil seal
- 3、 drive sprocket
- 4、 Drive shaft
- 5、 hydraulic motor

Specifications and parameters

Trenching machine

| Serial number | index | unit | parameter |
|---------------|----------------------------|-------|-----------|
| 1 | Operating weight | Kg | 162 |
| 2 | working pressure | Mpa | 16 |
| 3 | Work flow | L/Min | 50-70 |
| 3 | Digging trenches for teeth | piece | 31 |
| 4 | Trench width | mm | 150 |
| 5 | Excavation depth | mm | 900 |
| 5 | long | mm | 1730 |
| 6 | wide | mm | 622 |
| 7 | high | mm | 460 |

Maintenance

- 1、 Maintain sufficient lubricating oil: The various components of the trencher require lubrication with lubricating oil. It is recommended to inspect and replenish lubricating oil every 100 hours or once a week
- 2、 Regularly check the tensioning mechanism of the chain
- 3、 Check the bolt connection regularly to prevent loosening of the bolts.

Troubleshooting

1、 Instant faults are mainly manifested as the inability of the trencher to operate or abnormal sounds, which are usually caused by incorrect operation or overload work. Solving such problems requires immediate maintenance to ensure that the trencher is adjusted according to the actual situation during operation, avoiding overloading and reducing the occurrence of immediate failures.

2、 Hidden faults are faults that do not immediately manifest, such as component aging, which are usually caused by long-term overload work, accelerating the wear of machine components and potentially rendering the trencher unusable. Handling hidden faults requires regular inspection and maintenance to promptly identify and resolve potential issues, avoiding hidden faults from turning into immediate faults.

3、 In addition, daily usage habits and regular inspections are also key to maintaining the good working condition of the trencher. Correct usage habits can reduce machine wear and tear, while regular inspections can help identify and solve potential problems in a timely manner, ensuring the long-term stable operation of the trencher